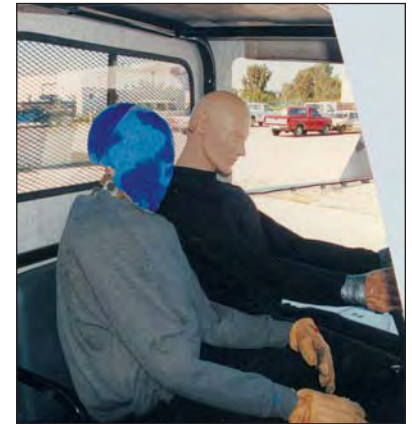


# Risk Analysis and Human Factors

Risk and the potential for injury and/or loss can be a factor of daily life. From transportation equipment to industrial settings, to consumer or recreational activities, all involve some level of risk. Analyzing risk and risk factors can provide useful information and perspective in evaluating product and system performance and trends. ESI staff has the technical capability to provide analysis of risk and risk trends using state-of-the-art accepted technology and real world experience. Our senior scientific staff is supported by researchers and technologists providing our clients useful risk assessments and analysis.

Since the dawn of time, man has been driven to develop a better “mouse-trap”. Human factors engineering and ergonomics is the modern extension of that pursuit.

At ESI, we have scientists and engineers with a broad range of experience in analyzing the “human element” in various applications. Our experience includes human motion studies, force capabilities, biomechanics, kinesiology, and predictive response research.



## Services

Ergonomics, Human Factors, and Biomechanics

Accident Trends Analysis

Military Applications

Warning and On-Product Labels

Novice Evaluations

Root Cause Identification

Live Subject Testing

Manuals and Training

Visibility Studies

Accident Data Analysis

Effects of Impairment

Exposure Studies

Systems Engineering

Failure Modes Analysis

