

Marine Research Capabilities

The Marine Research group at ESI provides clients technical services in recreational, commercial, and Port Operations. Our staff includes naval architects and marine engineers, marine product specialists and other professionals with education and experience in the broad range of technologies addressed in many marine applications. Our Florida operation includes a test facility specifically developed to address tests and evaluations in the recreational boating area with convenient access to open gulf water; functional on a year round basis. The test facility is supported by experienced technicians and marine mechanics as well as instrumentation, data acquisition equipment, test fixtures, and complete photo/video capability.



Testing and Research Services

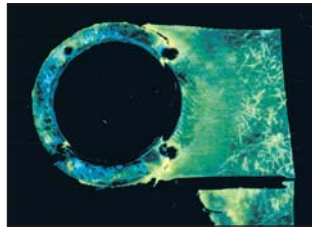
- Field Investigation
- Accident and Risk Analysis
- Hydrostatic Stability Analysis
- Compliance Testing
- Human Factors Testing
- Crash Testing
- Handling Evaluations
- Materials Failure Analysis
- Safety Audits
- Design Analysis



Technical Capability

ESI staff provide a broad range of technical skill and experience to efficiently address all areas of marine investigation and research:

Naval Architecture
Marine Engineering
Ship Design and Construction Contracting
Marine Contract Dispute Resolution
Rigging and Material Handling
Maritime Accident and Fire Investigation
Marine Product Specialist
Human Factors
Structural Engineering
Bio-Mechanics
Materials Specialist
Environmental Specialist
Design and Manufacturing Specialist



Accident analysis

The marine group at ESI is experienced in the investigation and analysis of most types of marine products and activities including commercial vessels, tug/pilot boats, recreational boats, water-sport products, and water-parks. Members of our group have served as consultants to a wide range of organizations in the marine field and actively participate in research, standards organizations, and technical analysis. ESI maintains the USCG Boating Accident Report Data base from 1969 through current year (2003). This data and related research provides historical perspective and useful risk analysis and accident trends.



Providing Clear Answers Through Insights and Multidisciplinary Excellence

Assignments vary from national disasters to simple evaluations. We address complex issues with a multidisciplinary approach and the sharing of knowledge. Add to that research specialists, laboratories, test facilities, first-class modeling and graphics, and you have the best advice and support available in this industry...right here at ESI.

Chicago/Aurora, IL (630) 851-4566
(Corporate Headquarters)

Atlanta, GA (770) 521-4252
Baton Rouge, LA (225) 292-0525
Colorado Springs, CO (719) 535-0400
Fort Myers, FL (239) 482-0500
Houston, TX (281) 448-6060
Miami, FL (305) 779-5911
St. Louis, MO (636) 240-6095