

Environmental Services

The environmental services team at ESI transcends multiple disciplines assisting clients in the evaluation of issues associated with environmental exposures in the work place, home or during accidental releases such as fires, explosions, and floods. Exposure mechanisms, environmental impacts, concentration and dispersion characteristics associated with physical, chemical and biological hazards are evaluated and assessed to provide answers and formulate solutions for an array of issues facing our clients.



Portable Mold Laboratory



Pesticide Exposure Research

Services

- Accident Incident Investigation
- System Safety Analysis
- Assessments
- Human Factor Evaluations
- Indoor Air Quality Investigation
- Safety Audits and Reviews
- Cause Analysis
- Training in Safety, Health, and Standards



Mold Inspection



Workplace Exposure

Regulations and Industry Standards

- ASTM
- OSHA
- CFR
- API
- NFPA
- NADCA
- ACGIH



Navy Training, Hawaii



Decontamination



Explosions



HAZWOPER

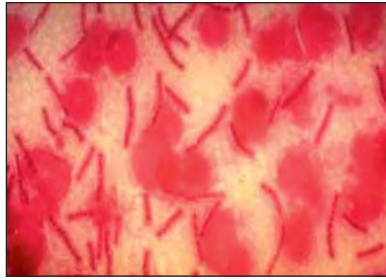
Environmental Services

Exposure Sources

Chemical: VOC's, Mists, Smoke, Fire

Biological: Mold, Bacteria, Viruses

Mineral: Asbestos, Fiber Glass, Dusts



Weapons Grade Anthrax Bacteria



Asbestos



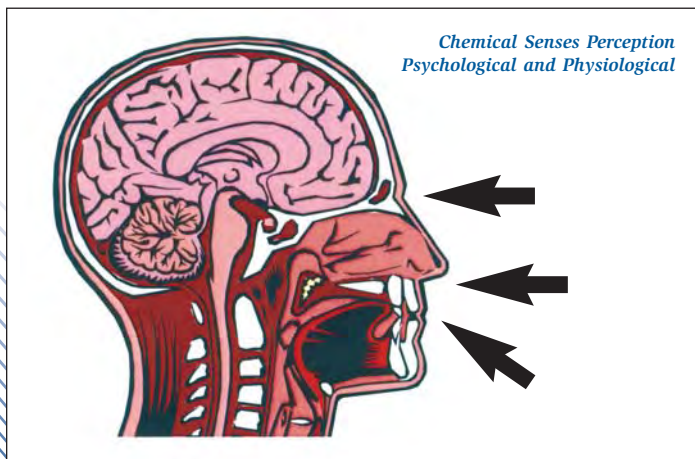
Mold/Bacteria Investigation

Exposure Routes

Inhalation

Ingestion

Dermal Contact



*Chemical Senses Perception
Psychological and Physiological*

Exposure Media

Air (home/workplace)

Water (drinking, surface water,
ground water, aerosolized)

Soil (subsurface, surface, dispersions)



Pesticide Exposure Research

Legal Support Capabilities

Expert Reports and Testimony

Demonstrative Graphics

Animations



Providing Clear Answers Through Insights and Multidisciplinary Excellence

Assignments vary from national disasters to simple evaluations. We address complex issues with a multidisciplinary approach and the sharing of knowledge. Add to that research specialists, laboratories, test facilities, first-class modeling and graphics, and you have the best advice and support available in this industry...right here at ESI.

Chicago/Aurora, IL (630) 851-4566
(Corporate Headquarters)

Atlanta, GA (770) 521-4252

Baton Rouge, LA (225) 292-0525

Colorado Springs, CO (719) 535-0400

Fort Myers, FL (239) 482-0500

Houston, TX (281) 448-6060

Miami, FL (305) 779-5911

St. Louis, MO (636) 240-6095