

Automotive Research

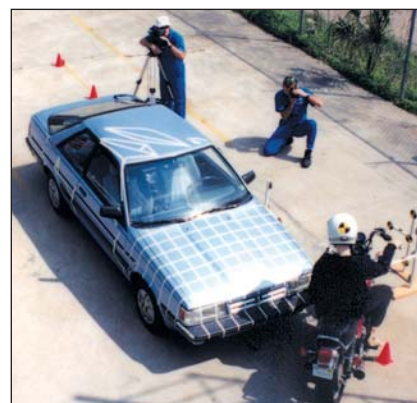
The Automotive Group of ESI brings together experienced professionals skilled in a broad range of technical disciplines related to automotive technology. This combined knowledge provides our clients with answers to key issues, through all levels and scope of the automotive arena. The Automotive staff of ESI includes engineers, scientists, researchers, technicians, and mechanics, all supported with the technology to address every aspect of automotive research.

Accident reconstruction capabilities through ESI are unique; providing our clients with field accident investigators, bio-mechanics and design analysts, and a materials failure specialist, all in an 'as needed' efficiently coordinated system. The scope of our projects ranges from basic accident analysis to assisting manufacturers in developing products and safety audits. Projects are conducted world-wide on a triage basis, with staff providing the appropriate technical approach for clear, scientifically-relevant answers to our clients questions and concerns.

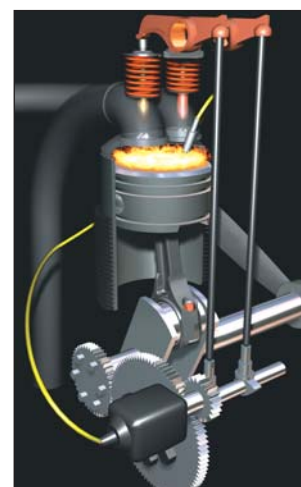
Areas of Specialization



- Automotive Design Analysis
- Engine and Emission Technology
- Specialty Vehicle Analysis
- Injury Causation Analysis
- Regulatory Review
- Manufacturing Technology
- Vehicle Systems Analysis
- Risk Analysis



- Research and Testing
- Vehicle Performance Analysis
- Electrical Systems
- Toxic and Health Exposure
- Materials Failure Analysis
- Human Factors
- Standards Compliance
- Accident Analysis

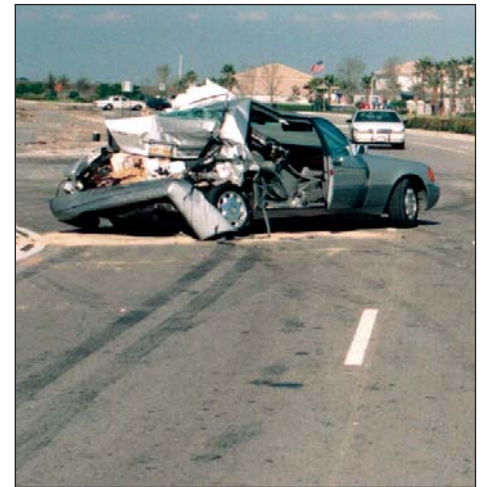


Automotive Research

Accident Analysis

Field Investigations
Site Studies
Visibility
Driver Response Analysis
Research and Testing
Simulation and Animation
Litigation
Component Failure Analysis

...if you want to know why an accident happened, ask ESI. We provide those answers everyday!



Vehicles

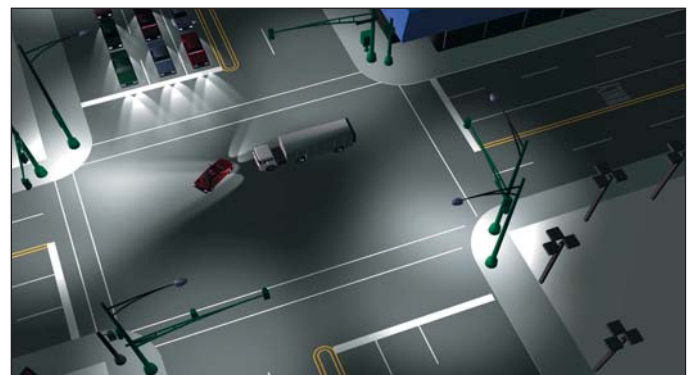
Passenger Cars/Trucks/SUVs
Commercial Vehicles
Industrial Vehicles
Motorcycles
Off-Road Vehicles
All-Terrain Vehicles
Bicycles
Recreational Vehicles
Snowmobiles
Golf Car Based Vehicles
Closed Community Vehicles



...anything with an engine or wheels.

Research and Testing

Human Factors Research
and Live Subject Testing
Compliance Testing
Risk Analysis and Exposure Surveys
Regulatory Reviews
Manuals and On-Product Labels
Component Testing
Materials Analysis
...our expertise is analyzing and preventing breaking, burning, or crashing.



Providing Clear Answers

Through Insights and Multidisciplinary Excellence

Assignments vary from national disasters to simple evaluations. We address complex issues with a multidisciplinary approach and the sharing of knowledge. Add to that research specialists, laboratories, test facilities, first-class modeling and graphics, and you have the best advice and support available in this industry...right here at ESI.

Chicago/Aurora, IL (630) 851-4566
(Corporate Headquarters)

Atlanta, GA (770) 521-4252

Baton Rouge, LA (225) 292-0525

Colorado Springs, CO (719) 535-0400

Fort Myers, FL (239) 482-0500

Houston, TX (281) 448-6060

Miami, FL (305) 779-5911

St. Louis, MO (636) 240-6095